

QUICK START GUIDE



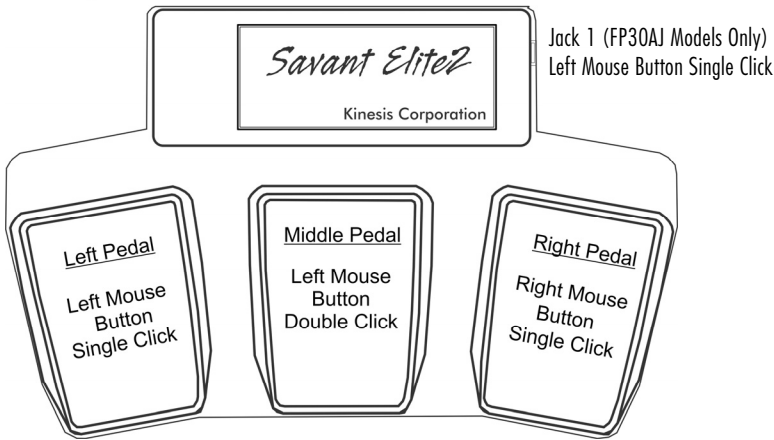
Kinesis® Savant Elite2™ Triple Pedal & SmartSet Config App, Models FP30A, FP30AJ & FPW30A-IPX8

There is no software or special drivers to install — all you need is a USB port. The Savant Elite2 works with Windows, Mac, Android, and Linux. SmartSet Config App versions are onboard for graphical programming in Windows & OSX. Visit the SE2 Resources page for full User's Manual including how to program in Android and Linux: www.kinesis.com/savant-elite2-resources/.

LANGUAGE NOTE: You must use U.S. English keyboard driver when re-programming your device, then switch back to your normal language.

DEFAULT CONFIGURATION

Your Savant Elite2 Triple Pedal comes with three or four factory-programmed actions:



To use your Savant Elite2 Triple Pedal with the factory-programmed actions:

1. Plug the USB cable into your computer.
2. The red LED will illuminate and a device installation notice will appear.
3. When the green LED illuminates, the device is ready to use with the pre-programmed actions.
4. To access Jack 1 on FP30AJ models, connect a Kinesis stand-alone foot pedal or hand trigger (sold separately).

22030 20th Avenue SE, Suite 102, Bothell, Washington 98021 USA
sales@kinesis.com, 800-454-6374, www.kinesis.com

CUSTOM CONFIGURATION OVERVIEW

Your Savant Elite2 (“SE2”) device features Kinesis SmartSet™ driverless configuration technology so it can be easily reprogrammed to trigger a variety of custom keyboard and/or mouse actions for each of its available pedals and jack (if equipped). To program a custom action, use the SmartSet application.

The SmartSet app is preloaded onto each Savant Elite2 device (both Windows and Mac versions). The app resides on a virtual drive (v-drive™) named “KINESIS FP ” which is only accessible from your computer when the device is placed into Program Mode. No special installation is required other than the auto-install performed by your computer when you first activate Program Mode. This guide includes step-by-step instructions to get started. The app also includes on-screen programming prompts and a help file.

SmartSet Configuration Application for SE2



NOTE: The SmartSet application for SE2 covers a variety of foot pedal devices and configurations. FP30A models must program through the Left, Middle & Right Pedals above (FP30AJ models add Jack 1). Ignore all other inputs.

TIPS AND TROUBLESHOOTING

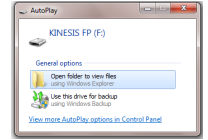
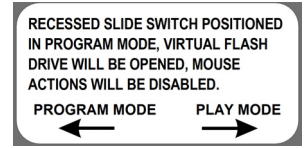
The KINESIS FP v-drive is only accessible when the device is placed into Program Mode. The appearance and location of the v-drive will vary by computer and operating system. If you have trouble locating the v-drive on your computer please refer to the User’s Manual for suggestions (link below).

For additional support:

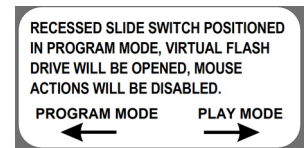
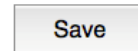
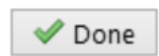
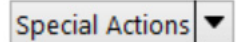
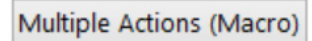
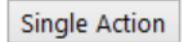
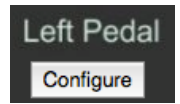
- Click the “Help” button inside the SmartSet app for additional instructions
- Visit the SE2 support page www.kinesis.com/savant-elite2-resources/ to download the SmartSet app or the User’s Manual, and to access Video Tutorials
- Email tech@kinesis.com
- Call 800-454-6374 (US only) or 425-402-8100 (8:30-11:30am & 12:30-4:30pm Pacific Time)

CUSTOM CONFIGURATION (WINDOWS)

1. With the SE2 device connected to a PC, activate Program Mode by SLIDING THE SWITCH on the underside of the device. For waterproof models, DEPRESS A PEDAL BRIEFLY WHILE PLUGGING IN THE USB. The red LED will illuminate briefly.
2. Once the LED changes to flashing green, OPEN the “KINESIS FP” drive. If you do not see an AutoPlay popup, look in “My Computer” for “KINESIS FP”.
3. Once inside the KINESIS FP drive, double-click the “SE2 SmartSet App (Win)” application to run it.
4. To program a new custom action, click CONFIGURE for the desired pedal (Left, Middle or Right) or Jack 1.
5. Choose the type of action to program by clicking either “Single Action”, “Multiple Actions (Macro)” or the “Special Actions” drop-down menu.
6. INPUT desired action(s) into the yellow programming box and click DONE.
7. The newly programmed action will now appear in the corresponding gray box below. REPEAT steps 4 — 6 as necessary to configure additional pedals/jacks.
8. If you are satisfied with your new custom action(s) click SAVE, and then CLICK EXIT PROGRAM.
9. Put the device back into Play Mode by SLIDING THE SWITCH. For waterproof models, RE-PLUG THE USB.
10. Your Savant Elite2 device is now ready to use with your custom programmed actions!



SE2



CUSTOM CONFIGURATION (MAC)

1. With the SE2 device connected to a Mac, activate Program Mode by SLIDING THE SWITCH on the underside of the device. For waterproof models, DEPRESS A PEDAL BRIEFLY WHILE PLUGGING IN THE USB. The red LED will illuminate briefly.
2. If the Keyboard Setup Assistant pops up, CLOSE that window or SKIP the setup.
3. Once the LED changes to flashing green, OPEN the “KINESIS FP” drive. If you do not see the icon on the desktop, look in Finder > Devices for “KINESIS FP”.
4. Once inside the KINESIS FP drive, double-click the “SE2 SmartSet App (Mac)” application to run it.
5. To program a new custom action, click CONFIGURE for the desired pedal (Left, Middle or Right) or Jack 1.
6. Choose the type of action to program by clicking either “Single Action”, “Multiple Actions (Macro)” or the “Special Actions” drop-down menu.
7. INPUT desired action(s) into the yellow programming box and click DONE.
8. The newly programmed action will now appear in the corresponding gray box below. REPEAT steps 5 — 7 as necessary to configure additional pedals/jacks.
9. If you are satisfied with your new custom action(s) click SAVE, and then click EXIT PROGRAM.
10. Put the device back into Play Mode by SLIDING THE SWITCH. For waterproof models, RE-PLUG THE USB.
11. Your Savant Elite2 device is now ready to use with your custom programmed actions!

