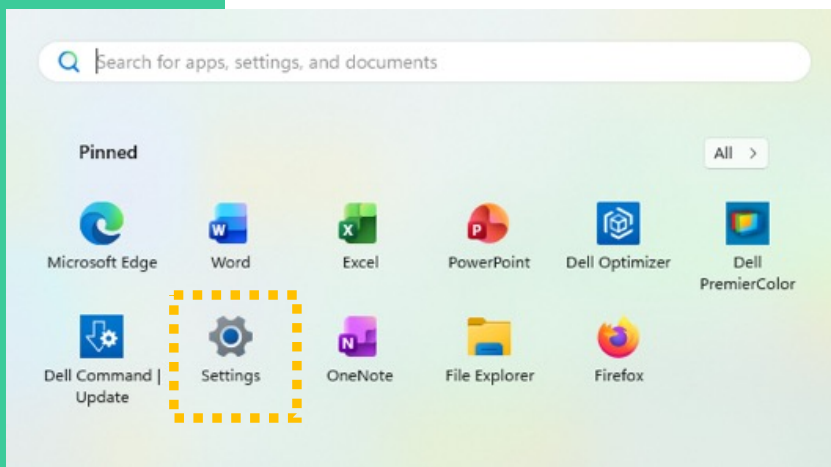


# TECH TUTORIAL Pairing Freestyle2 Blue with Windows11

## Launch Settings Menu

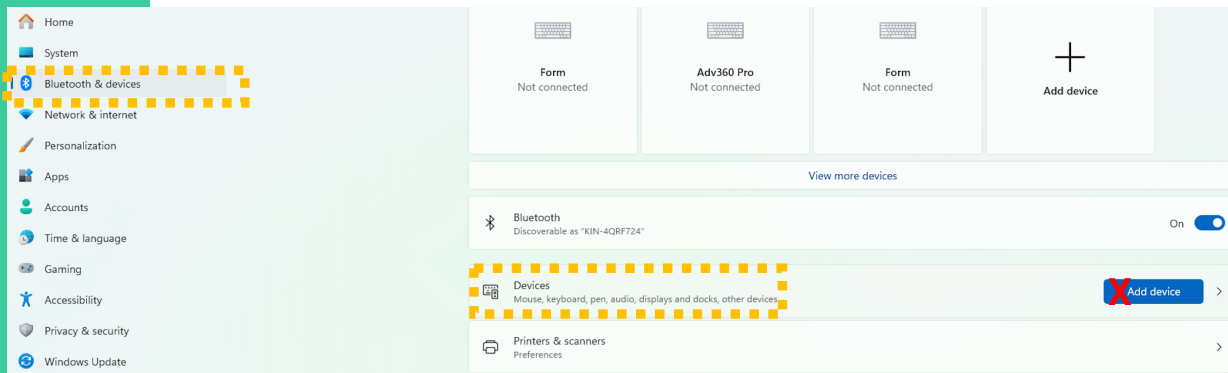


1. Tap the Windows key and click the Settings Icon OR type "Settings" into the Windows search bar

1

# TECH TUTORIAL Pairing Freestyle2 Blue with Windows11

## Access Bluetooth Devices



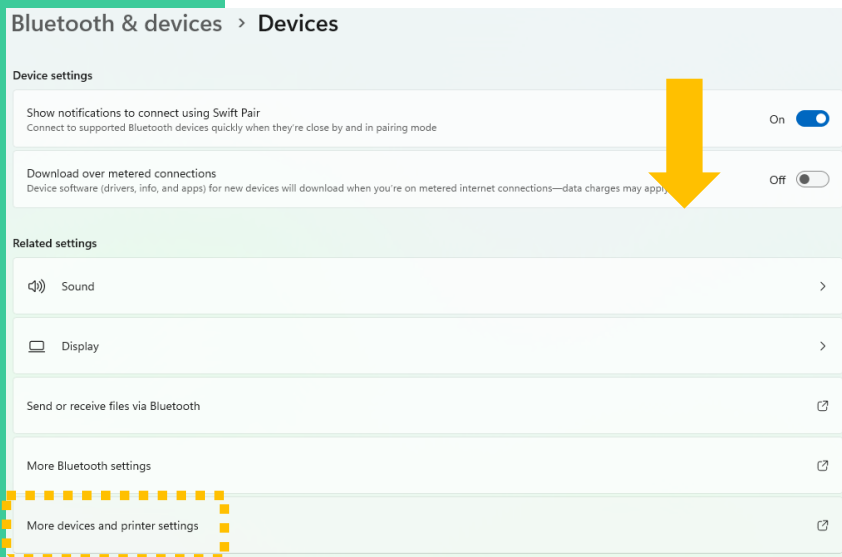
1. Click “Bluetooth & Devices” in the menu at left
2. Then click “Devices” at right

**DO NOT CLICK the BLUE “Add device” button**

2

# TECH TUTORIAL Pairing Freestyle2 Blue with Windows11

## More devices and printer settings menu

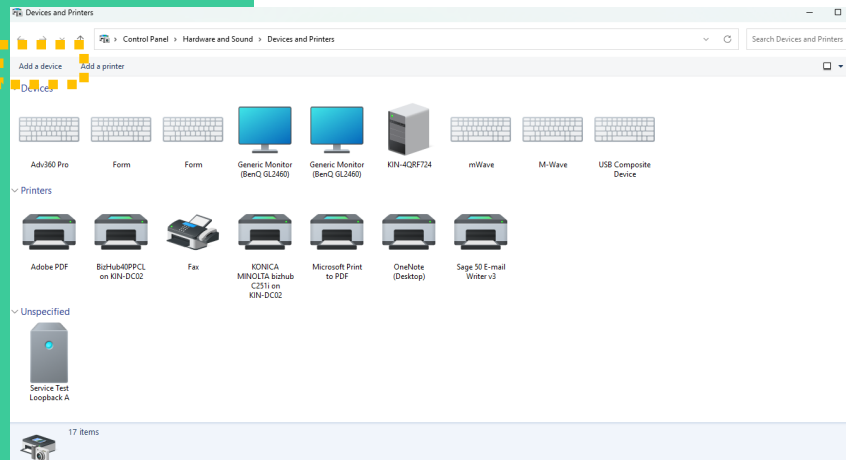


1. Scroll down the page
2. Then click “More devices and printer settings”

3

# TECH TUTORIAL Pairing Freestyle2 Blue with Windows11

## Add a device

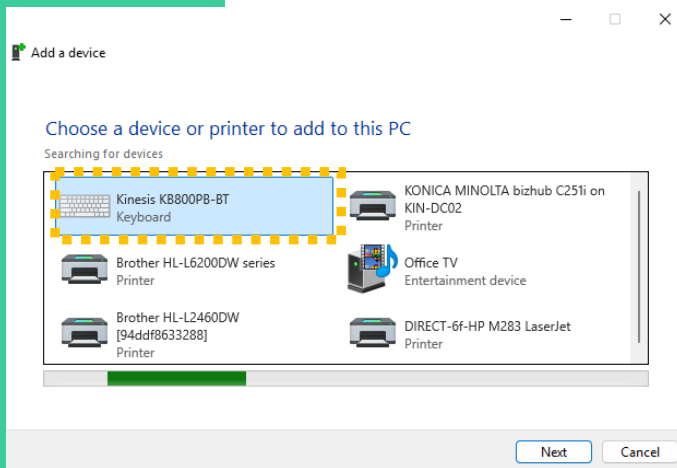


1. Click the Add a Device button

4

# TECH TUTORIAL Pairing Freestyle2 Blue with Windows11

## Prepare keyboard for pairing



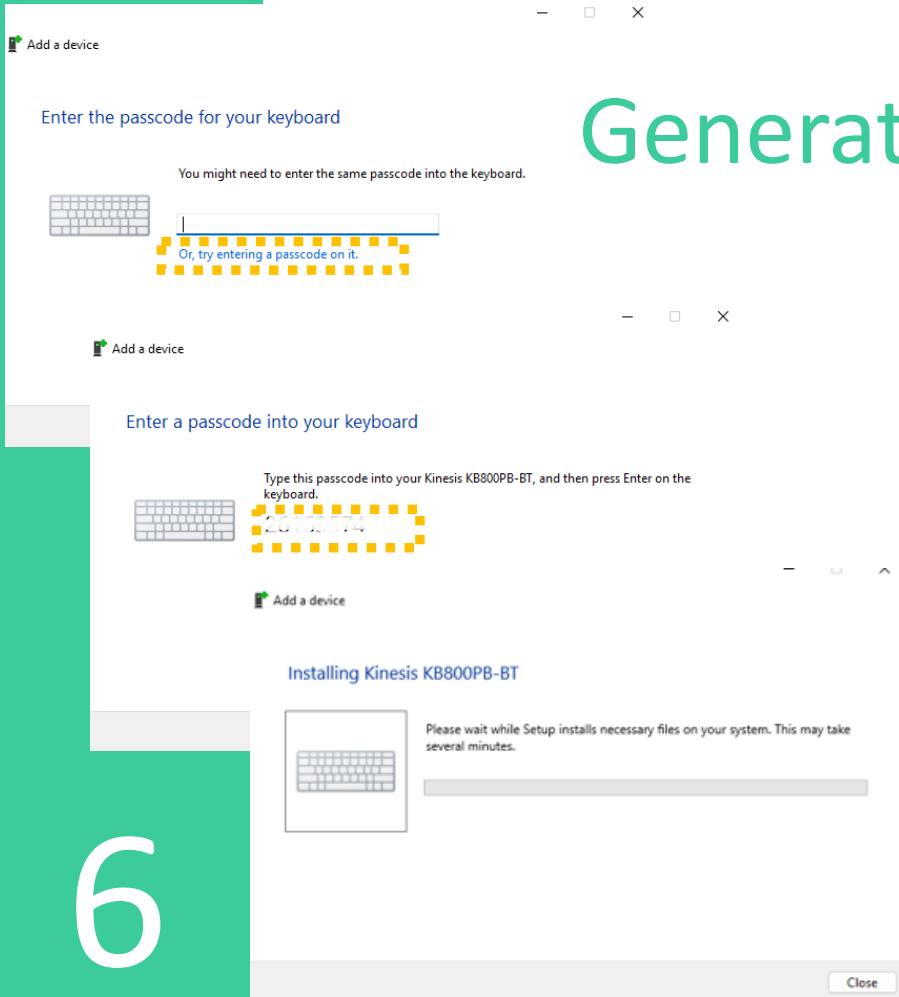
1. Power on the Freestyle2 Blue keyboard
2. Press the Connect button on the underside
3. Use the Fn button to select one of the 3 Bluetooth channels via the 3 blue legended hotkeys
4. Then select the Kinesis KB800PB-BT from the list (Note: it may also display as simply "Keyboard") and click the "Next" button

*If you do not see the keyboard in the list, repeat steps 1-3 above*

5

# TECH TUTORIAL Pairing Freestyle2 Blue with Windows11

## Generate and enter Passcode



1. Click "Or, try entering a passcode on it" to have Windows generate the passcode.
2. Type this UNIQUE one-time passcode on the Freestyle2 Blue keyboard and then press enter
3. The computer will take several minutes to complete the pairing process and then you are ready to go.

*Note: If you wait too long the keyboard will go to sleep. You can try regenerating the passcode and/or hitting the connect button again to restart the process*

6