

RECOGNIZED COMPONENT **Constructional Data Report (CDR)**

1.0 Reference and Address			
Report Number	3183319MPK-002	Original Issued: 21-Jul-2009	Revised: 3-Sep-2014
Standard(s)	UL 60601-1, First Edition, 2003 Issued: 2006/04/26 Medical Electrical Equipment – Part 1: General Requirements for Safety CSA C22.2#601.1 Issued: 1990/01/01 (R2005) Medical Electrical Equipment - Part 1: General Requirements for Safety General Instruction No. 1: 1990, Supplement 1: 1994, Amendment 2: 1998; General Instruction No. 2: 2003		
Applicant	Kinesis Corporation	Manufacturer	Kinesis Corporation
Address	22030 20th Avenue SE, Suite 102 Bothell, WA 98021-7404	Address	22030 20th Avenue SE, Suite 102 Bothell, WA 98021-7404
Country	USA	Country	USA
Contact	Joy De Lucia Alt. Carsten Buus	Contact	Carsten Buus Alt. William Hargreaves
Phone	425.402.8100 x533 425.402.8100 x531	Phone	425.402.8100 x531 425.402.8100 x526
FAX	425.402.8181	FAX	425.402.8181
Email	jdelucia@kinesis.com	Email	cbuus@kinesis.com

2.0 Product Description	
Product	USB Foot Pedals
Brand name	Kinesis
Description	The equipment covered by this report is a family of USB-connected foot switches which emulate keyboard, mouse-button, or joystick button actions and which employing a control box that can connect between one and four foot switches. Optional thumb triggers may be substituted for foot switches on jack-equipped models.
Models	<p>Non-Waterproof (IPX1): FS10J, FS12J-JSB, FS20A, FS20AJ, FS22A-JSB, FS22AJ-JSB, FS30A, FS30AJ, FS32A-JSB, FS32AJ-JSB, FS002HT8, FS007MP, FSMJ2, FSMJ4, FSMJ2-JSB, FSMJ4-JSB; FP10J, FP12J-JSB, FP20A, FP20AJ, FP22A-JSB, FP22AJ-JSB, FP30A, FP30AJ, FP32A-JSB, FP32AJ-JSB, FPMJ2, FPMJ4, FPMJ2-JSB, FPMJ4-JSB</p> <p>Waterproof (IPX8): FSW10-IPX8, FSW11-IPX8, FSW12-JSB-IPX8, FSW13-JSB-IPX8, FSW20A-IPX8, FSW22A-JSB-IPX8, FSW30A-IPX8, FSW32A-JSB-IPX8, FSW007MP-IPX8, FSW14-IPX8, FSW15-JSB-IPX8; FPW10-IPX8, FPW11-IPX8, FPW12-JSB-IPX8, FPW13-JSB-IPX8, FPW20A-IPX8, FPW22A-JSB-IPX8, FPW30A-IPX8, FPW32A-JSB-IPX8, FPW14-IPX8, FPW15-JSB-IPX8</p> <p>Optional Non-Waterproof (IPX1): FS10J-xx or -xxx, FS12J-JSB-xx or -xxx, FS20A-xx or -xxx, FS20AJ-xx or -xxx, FS22A-JSB-xx or -xxx, FS22AJ-JSB-xx or -xxx, FS30A-xx or -xxx, FS30AJ-xx or -xxx, FS32A-JSB-xx or -xxx, FS32AJ-JSB-xx or -xxx; FS002HT8-xx or -xxx, FS007MP-xx or -xxx, FSMJ2-xx or -xxx, FSMJ4-xx or -xxx, FSMJ2-JSB-xx or -xxx, FSMJ4-JSB-xx or -xxx; FP10J-xx or -xxx, FP12J-JSB-xx or -xxx, FP20A-xx or -xxx, FP20AJ-xx or -xxx, FP22A-JSB-xx or -xxx, FP22AJ-JSB-xx or -xxx, FP30A-xx or -xxx, FP30AJ-xx or -xxx, FP32A-JSB-xx or -xxx, FP32AJ-JSB-xx or -xxx, FPMJ2-xx or -xxx, FPMJ4-xx or -xxx, FPMJ2-JSB-xx or -xxx, FPMJ4-JSB-xx or -xxx</p> <p>Waterproof (IPX8): FSW10-IPX8-xx or -xxx, FSW11-IPX8-xx or -xxx, FSW12-JSB-IPX8-xx or -xxx, FSW13-JSB-IPX8-xx or -xxx, FSW20A-IPX8-xx or -xxx, FSW22A-JSB-IPX8-xx or -xxx, FSW30A-IPX8-xx or -xxx, FSW32A-JSB-IPX8-xx or -xxx, FSW007MP-IPX8-xx or -xxx, FSW14-IPX8-xx or -xxx, FSW15-JSB-IPX8-xx or -xxx; FPW10-IPX8-xx or -xxx, FPW11-IPX8-xx or -xxx, FPW12-JSB-IPX8-xx or -xxx, FPW13-JSB-IPX8-xx or -xxx, FPW20A-IPX8-xx or -xxx, FPW22A-JSB-IPX8-xx or -xxx, FPW30A-IPX8-xx or -xxx, FPW32A-JSB-IPX8-xx or -xxx, FPW14-IPX8-xx or -xxx, FPW15-JSB-IPX8-xx or -xxx</p> <p>where -xx or -xxx designates optional alphanumeric character to indicate customization such as custom programming, silkscreening, or product color.</p>

2.0 Product Description	
Model Similarity	<p>Non-Waterproof (IPX1):</p> <p>FS10J & FP10J – 1 pedal; ~9ft cable; 2 input jacks; keyboard & mouse button emulation; user programmable</p> <p>FS10J-xx or -xxx & FP10J-xx or -xxx – exactly the same as FS10J & FP10J, respectively but with customization such as custom programming, silkscreening, or product color.</p> <p>FS12J-JSB & FP12J-JSB – 1 pedal; ~9ft cable; 2 input jacks; joystick button emulation</p> <p>FS12J-JSB-xx or -xxx & FP12J-JSB-xx or -xxx – exactly the same as FS12J-JSB & FP12J-JSB, respectively but with customization such as custom programming, silkscreening, or product color.</p> <p>FS20A & FP20A – 2 pedals; ~2in cable; steel base; keyboard & mouse button emulation; user programmable</p> <p>FS20A-xx or -xxx & FP20A-xx or -xxx – exactly the same as FS20A & FP20A, respectively but with customization such as custom programming, silkscreening, or product color.</p> <p>FS20AJ & FP20AJ – 2 pedals; ~2in cable; steel base; 1 input jack; keyboard & mouse button emulation; user programmable</p> <p>FS20AJ-xx or -xxx & FP20AJ-xx or -xxx – exactly the same as FS20AJ & FP20AJ but with customization such as custom programming, silkscreening, or product color.</p> <p>FS22A-JSB & FP22A-JSB – 2 pedals, ~2in cable; steel base; joystick button emulation</p> <p>FS22A-JSB-xx or -xxx & FP22A-JSB-xx or -xxx – exactly the same as FS22A-JSB & FP22A-JSB, respectively but with customization such as custom programming, silkscreening, or product color.</p> <p>FS30A & FP30A – 3 pedals; ~2in cable; steel base; keyboard & mouse button emulation; user programmable</p> <p>FS30A-xx or -xxx & FP30A-xx or -xxx – exactly the same as FS30A & FP30A but with customization such as custom programming, silkscreening, or product color.</p> <p>FS30AJ & FP30AJ – 3 pedals; ~2in cable; steel base; 1 input jack; keyboard & mouse button emulation; user programmable</p> <p>FS30AJ-xx or -xxx & FP30AJ-xx or -xxx – exactly the same as FS30AJ & FP30AJ but with customization such as custom programming, silkscreening, or product color.</p> <p>FS32A-JSB & FP32A-JSB – 3 pedals; ~2in cable; steel base; joystick button emulation</p> <p>FS32A-JSB-xx or -xxx & FP32A-JSB-xx or -xxx – exactly the same as FS32A-JSB & FP32A-JSB, respectively but with customization such as custom programming, silkscreening, or product color.</p> <p>FS32AJ-JSB & FP32AJ-JSB – 3 pedals; ~2in cable; steel base; 1 input jack; joystick button emulation</p> <p>FS32AJ-JSB-xx or -xxx & FP32AJ-JSB-xx or -xxx – exactly the same as FS32AJ-JSB & FP32AJ-JSB, respectively but with customization such as custom programming, silkscreening, or product color.</p> <p>FS002HT8 – 1 thumb switch; ~6ft cable; as optional accessory for jack-equipped models</p> <p>FS002HT8-xx or -xxx – is exactly the same as FS002HT8 but with customization such as custom programming, silkscreening, or product color.</p>

2.0 Product Description	
Model Similarity	<p>FS007MP – 1 pedal; ~9ft cable; as optional accessory for jack-equipped models FS007MP-xx or -xxx – exactly the same as FS007MP but with customization such as custom programming, silkscreening, or product color.</p> <p>FSMJ2 & FPMJ2 – 2 input jacks; keyboard & mouse button emulation; for use with FS007MP, FSW007MP-IPX8, or FS002HT8 which are packaged and sold separately FSMJ2-xx or -xxx & FPMJ2-xx or -xxx – exactly the same as FSMJ2 & FPMJ2 but with customization such as custom programming, silkscreening, or product color.</p> <p>FSMJ4 & FPMJ4 – 4 input jacks; keyboard & mouse button emulation; for use with FS007MP, FSW007MP-IPX8, or FS002HT8 which are packed and sold separately FSMJ4-xx or -xxx & FPMJ4-xx or -xxx – exactly the same as FSMJ4 & FPMJ4, respectively but with customization such as custom programming, silkscreening, or product color.</p> <p>FSMJ2-JSB & FPMJ2-JSB – 2 input jacks; joystick button emulation; with separate (free-standing) control module components FSMJ2-JSB-xx or -xxx & FPMJ2-JSB-xx or -xxx – exactly the same as FSMJ2-JSB & FPMJ2-JSB, respectively but with customization such as custom programming, silkscreening, or product color.</p>
	<p>FSMJ4-JSB-xx or -xxx & FPMJ4-JSB-xx or -xxx – exactly the same as FSMJ4-JSB & FPMJ4-JSB, respectively but with customization such as custom programming, silkscreening, or product color.</p> <p>Waterproof (IPX8): FSW10-IPX8 & FPW10-IPX8 – 1 pedal; ~9ft cable; keyboard & mouse button emulation FSW10-IPX8-xx or -xxx & FPW10-IPX8-xx or -xxx – exactly the same as FSW10-IPX8 & FPW10-IPX8 but with customization such as custom programming, silkscreening, or product color.</p> <p>FSW11-IPX8 & FPW11-IPX8 – 2 pedals; ~9ft cable; keyboard & mouse button emulation FSW11-IPX8-xx or -xxx & FPW11-IPX8-xx or -xxx – exactly the same as FSW11-IPX8 & FPW11-IPX8, respectively but with customization such as custom programming, silkscreening, or product color.</p> <p>FSW12-JSB-IPX8 & FPW12-JSB-IPX8 – 1 pedal; ~9ft cable; joystick button emulation FSW12-JSB-IPX8-xx or -xxx & FPW12-JSB-IPX8-xx or -xxx – exactly the same as FSW12-JSB-IPX8 & FPW12-JSB-IPX8, respectively but with customization such as custom programming, silkscreening, or product color.</p> <p>FSW13-JSB-IPX8 & FPW13-JSB-IPX8 – 2 pedals; ~9ft cable; joystick button emulation FSW13-JSB-IPX8-xx or -xxx & FPW13-JSB-IPX8-xx or -xxx – exactly the same as FSW13-JSB-IPX8 & FPW13-JSB-IPX8, respectively but with customization such as custom programming, silkscreening, or product color.</p>

2.0 Product Description	
(cont..)	<p>FSW22A-JSB-IPX8 & FPW22A-JSB-IPX8 – 2 pedals; ~2in cable; steel base; joystick button emulation</p> <p>FSW22A-JSB-IPX8-xx or -xxx & FPW22A-JSB-IPX8-xx or -xxx – exactly the same as FSW22A-JSB-IPX8 & FPW22A-JSB-IPX8, respectively but with customization such as custom programming, silkscreening, or product color.</p> <p>FSW30A-IPX8 & FPW30A-IPX8 – 3 pedals; ~2in cable; steel base; keyboard & mouse button emulation</p> <p>FSW30A-IPX8-xx or -xxx & FPW30A-IPX8-xx or -xxx – exactly the same as FSW30A-IPX8 & FPW30A-IPX8, respectively but with customization such as custom programming, silkscreening, or product color.</p> <p>FSW32A-JSB-IPX8 & FPW32A-JSB-IPX8 – 3 pedals; ~2in cable; steel base; joystick button emulation</p> <p>FSW32A-JSB-IPX8-xx or -xxx & FPW32A-JSB-IPX8-xx or -xxx – exactly the same as FSW32A-JSB-IPX8 & FPW32A-JSA-IPX8, respectively but with customization such as custom programming, silkscreening, or product color.</p> <p>FSW007MP-IPX8 & FPW007MP-IPX8– 1 pedal; ~9ft cable; as optional accessory for jack-equipped models</p> <p>FSW007MP-IPX8-xx or -xxx & FPW007MP-IPX8-xx or -xxx – exactly the same as FSW007MP-IPX8 & FPW007MP-IPX8, respectively but with customization such as custom programming, silkscreening, or product color.</p> <p>FSW14-IPX8 & FPW14-IPX8 – 4 pedals; ~9ft cable; keyboard & mouse button emulation</p> <p>FSW14-IPX8-xx or -xxx & FPW14-IPX8-xx or -xxx – exactly the same as FSW14-IPX8 & FPW14-IPX8, respectively but with customization such as custom programming, silkscreening, or product color.</p> <p>FSW15-JSB-IPX8 & FPW15-JSB-IPX8 – 4 pedals; ~9ft cable; joystick button emulation</p> <p>FSW15-JSB-IPX8-xx or -xxx & FPW15-JSB-IPX8-xx or -xxx – exactly the same as FSW15-JSB-IPX8 & FPW15-JSB-IPX8, respectively but with customization such as custom programming, silkscreening, or product color.</p>
Ratings	5 VDC, 50 mA
Other Ratings	N/A
Conditions of Acceptability	<p>The products covered in this Report are incomplete in construction features or limited in performance capabilities and are intended for use and evaluation in other products. Consideration should be given to the following when the component is used in or with another product.</p> <p>Leakage Current and Temperature Testing should be performed on this component when installed in the end product.</p>

3.0 Product Photographs

Photo 1 - External View of Model FP30J



Photo 1a - External View of Model FS30J



3.0 Product Photographs

Photo 2 - External View of FSW20A-IPX8 and FPW20A-IPX8



3.0 Product Photographs

Photo 3 - External View of Model FP10J and component FS007MP (left)



Photo 4 - Internal View of Model FS007MP



3.0 Product Photographs

Photo 5 - Internal View of Model FSW10-IPX8 and FPW10-IPX8

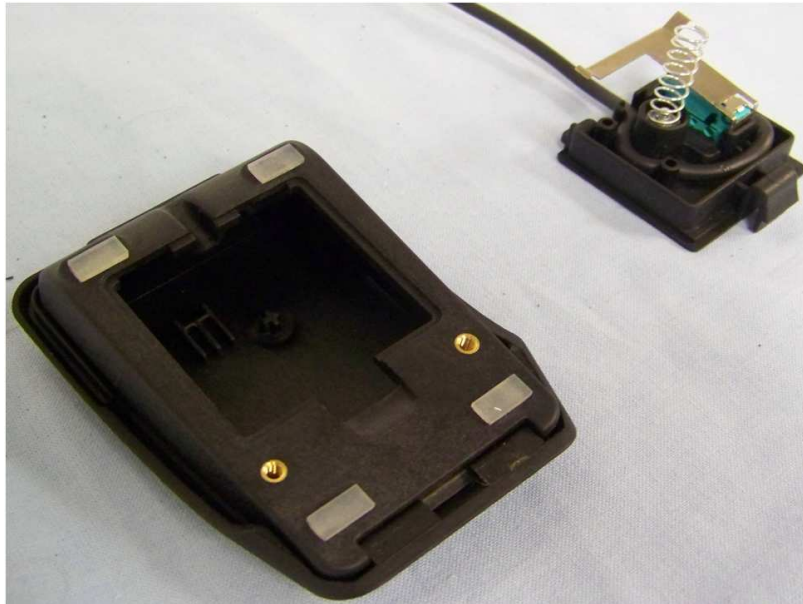


Photo 6 - Internal View of Control Box for "FP" models



5

3.0 Product Photographs

Photo 6a - Internal View of Control Box for "FS" models

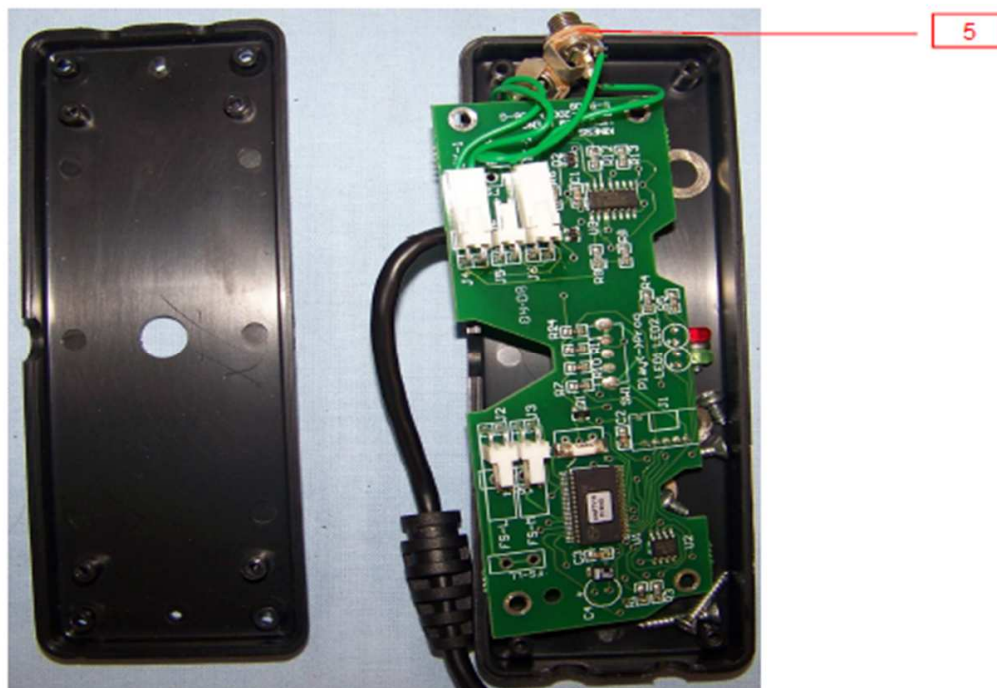


Photo 7 - Top View of Control Box Printed Wiring Board for "FP" models

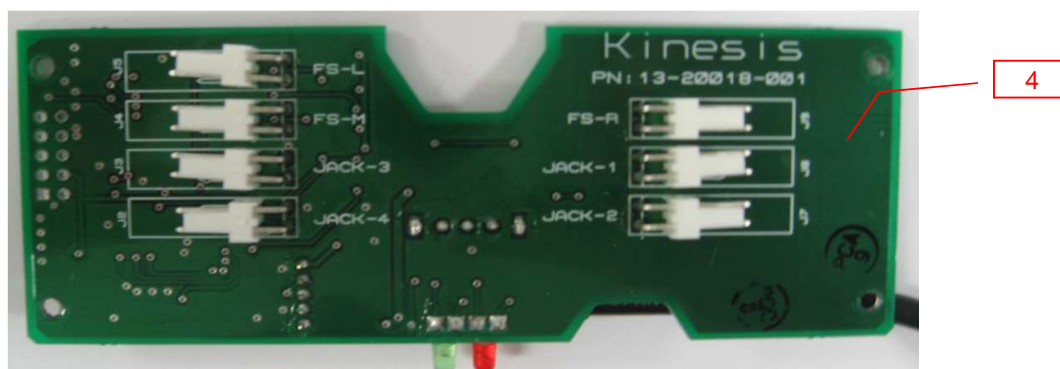


Photo 7a - Top View of Control Box Printed Wiring Board for "FS" models

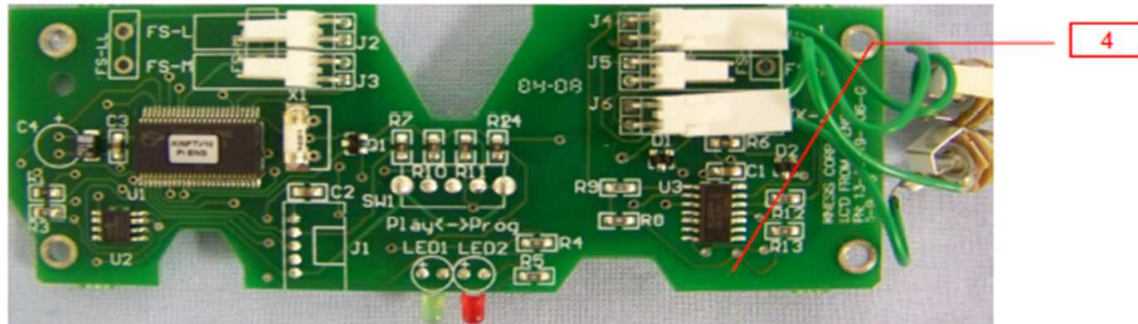
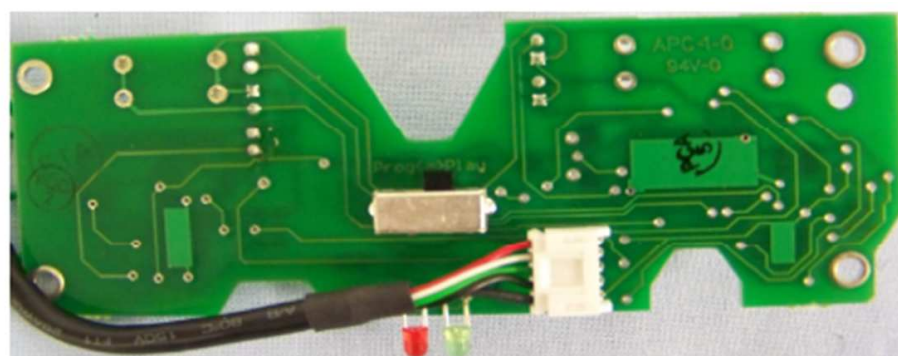


Photo 8 - Rear View of Control Box Printed Wiring Board for "FP" models



Photo 8a - Rear View of Control Box Printed Wiring Board for "FS" models



4.0 Critical Components						
Photo #	Item no. ¹	Name	Manufacturer/ trademark ²	Type / model ²	Technical data and securement means	Mark(s) of conformity ³
1, 1a	1	Enclosure	Polycase	Various	Constructed of ABS plastic with flammability rating of V-0. Overall dimensions are 5.5 x 2 x 0.815 in with 2.74 mm thickness.	cULus
4	2	Foot pedal Switches (All models)	Various	Various	one to three provided depending on Model. Rated minimum 5 V (AC/DC), 0.1 A.	cURus
5	3	reserved for future use	reserved for future use	reserved for future use	reserved for future use	NR
7, 7a	4	PWB	Various	Various	Rated 94V-0, 105°C.	cURus
6, 6a	5	Input Jack, panel mount (1 to 4)	Various	Various	Contact rated 48Vdc and 0.25A.	UR
6	6	Potting Compound (Not Shown)	Various	Various	Rated HB.	UR
6	7	Label (Not Shown)	Various	Various	Static dissipative adhesives with gloss finish.	UR
<p>NOTES:</p> <p>1) Not all item numbers are indicated (called out) in the photos, as their location is obvious.</p> <p>2) "Various" means any type, from any manufacturer that complies with the "Technical data and securement means" and meets the "Mark(s) of conformity" can be used.</p> <p>3) Indicates specific marks to be verified, which assures the agreed level of surveillance for the component. "NR" - indicates Unlisted and only visual examination is necessary. "See 5.0" indicates Unlisted components or assemblies to be evaluated periodically refer to section 5.0 for details.</p>						

5.0 Critical Unlisted CEC Components

No Unlisted CEC components are used in this report.

6.0 Critical Features

Recognized Component - A component part, which has been previously evaluated by an accredited certification body with restrictions and must be evaluated as part of the basic product considering the restrictions as specified by the Conditions of Acceptability.

Listed Component - A component part, which has been previously Listed or Certified by an accredited Certification Organization with no restrictions and is used in the intended application within its ratings.

Unlisted Component - A part that has not been previously evaluated to the appropriate designated component standard. It may also be a Listed or Recognized component that is being used outside of its evaluated Listing or component recognition.

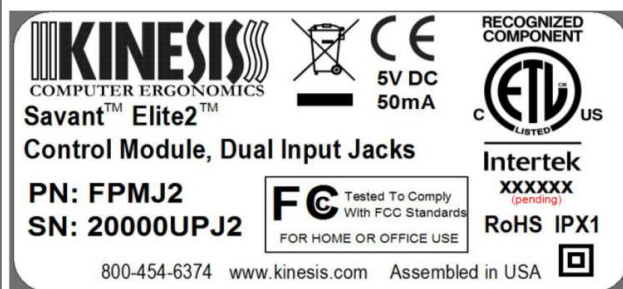
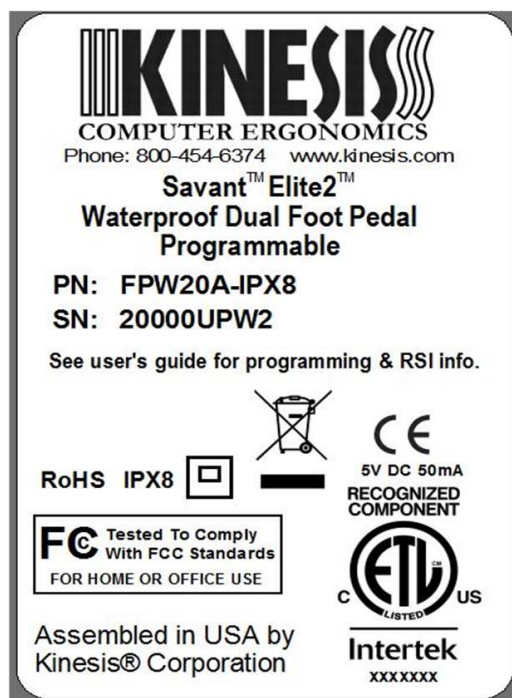
Critical Features/Components - An essential part, material, subassembly, system, software, or accessory of a product that has a direct bearing on the product's conformance to applicable requirements of the product standard.

Construction Details - For specific construction details, reference should be made to the photographs and descriptions. All dimensions are approximate unless specified as exact or within a tolerance. In addition to the specific construction details described in this Report, the following general requirements also apply.

1. Spacing - Spacing are maintained with 1.6 mm minimum through air and over surfaces of insulating material between such current-carrying parts and dead-metal parts or low voltage isolated circuits.
2. Mechanical Assembly - Components such as switches, fuseholders, connectors, wiring terminals and display lamps are mounted and prevented from shifting or rotating by the use of lockwashers, starwashers, or other mounting format that prevents turning of the component.
3. Corrosion Protection - All ferrous metal parts are protected against corrosion by painting, plating or the equivalent.
4. Accessibility of Live Parts - All uninsulated live parts in primary circuitry are housed within a non-metallic enclosure constructed with no openings other than those specifically described in Sections 4 and 5.
5. Grounding - This product is not provided with a means of grounding as it is not required to be grounded since equipment is not mains connected.
6. Polarized Connection - N/A
7. Internal Wiring - Internal wiring is routed away from sharp or moving parts. Internal wiring leads terminating in soldered connections are made mechanically secure prior to soldering. Recognized Component separable (quick disconnect) connectors of the positive detent type, closed loop connectors, or other types specifically described in the text of this report are also acceptable as internal wiring terminals. At points where internal wiring passes through metal walls or partitions, the wiring insulation is protected against abrasion or damage by plastic bushings or grommets. All wiring is minimum 28 AWG, with a minimum rating of 30V, 80°C.
8. Schematics - N/A
9. Markings - The product is marked on as labeling system as described in item no. 7 of Section 4.0 or by molding into polymeric enclosure as follows: Refer to Illustration 1 and Illustration 1a. Class II marking shall be present in all marking labels.
10. Cautionary Markings - N/A
11. Installation, Operating and Safety Instructions - Instructions for installation and use of this product are provided by the manufacturer.

7.0 Illustrations

Illustration 1 - Marking Labels for FP30AJ, FPW20A-IPX8, FPW10-IPX8, FPMJ2 and FS007MP



7.0 Illustrations

Illustration 1a - Marking Labels for FS30AJ, FSW20A-IPX8, FSW10-IPX8 and FSMJ2

Savant Elite Triple Programmable Foot Switch, USB

with jack for additional input device

PN: FS30AJ



SN: 80001UF3J

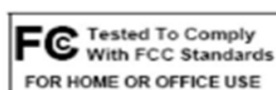


Assembled in USA by

Kinesis Corporation
Bothell WA
www.kinesis.com



IPX1 RoHS



Phone: 800-454-6374 www.kinesis.com

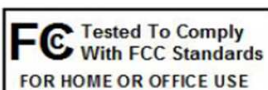
Waterproof USB Dual Angled Foot Switch

PN: FSW20A-IPX8

SN: 80004WUFA2

See User's Guide for programming & RSI info.

Programming:
Read User's Manual before
accessing programming switch.



IPX8
RoHS

CE
5V DC 50mA

Assembled in USA



7.0 Illustrations

Illustration 2 - Drawing of Control Box Enclosure

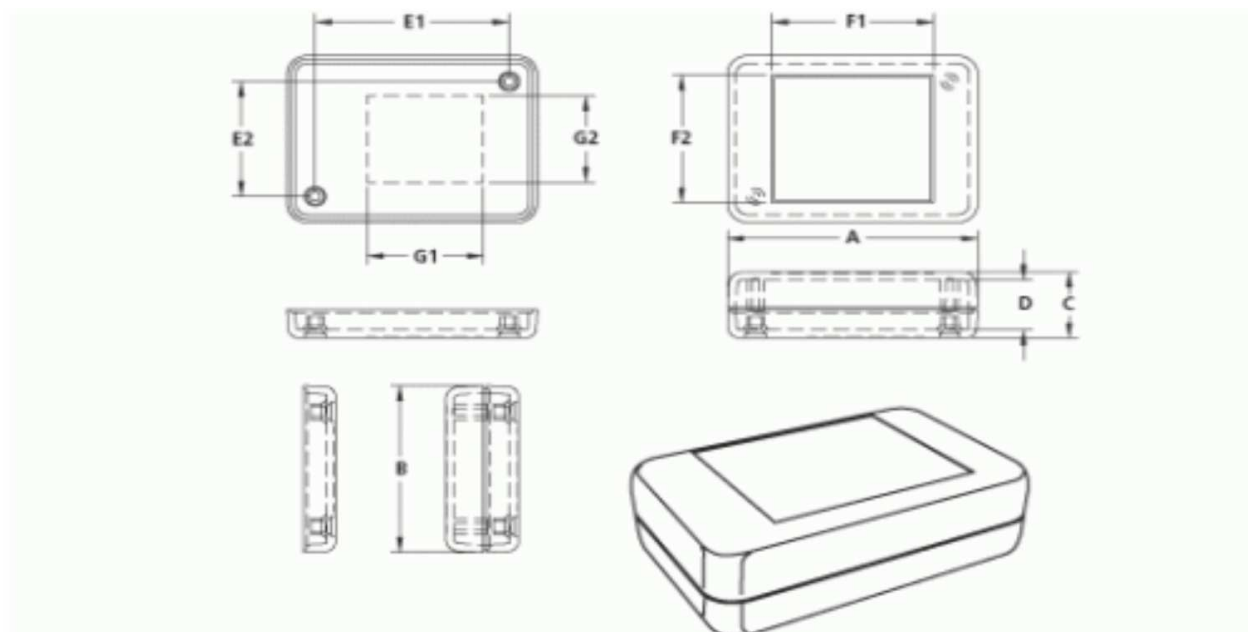
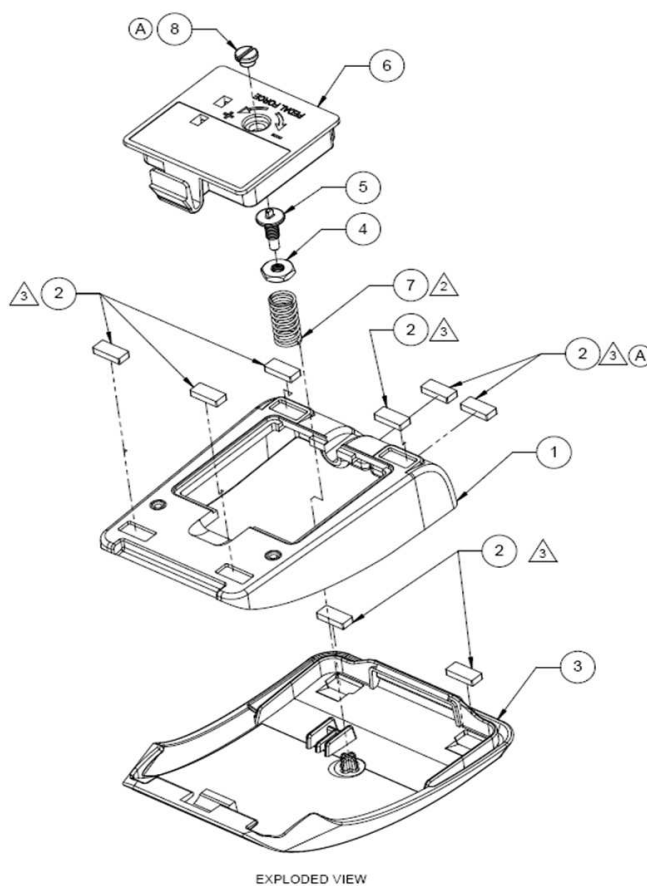


Illustration 2 - Drawing of Foot Switch Enclosure



7.0 Illustrations

Illustration 3 - Safety Warnings

Illustration Removed.

8.0 Test Summary					
Evaluation Period	6/25/09 to 6/26/09		Project No.	3183319	
Sample Rec. Date	6/24/2009	Condition	Production	Sample ID.	See list below.
Test Location	1365 Adams Ct. Menlo Park, CA 94025				
Test Procedure	Testing Lab				
Determination of the result includes consideration of measurement uncertainty from the test equipment and methods. The product was tested as indicated below with results in conformance to the relevant test criteria.					
The following tests were performed:					
Test Description	UL 60601-1	CSA C22.2#601.1			
Durability of Marking	6.1z	6.1z			
Dielectric Strength	20	20			
Drop	21.6	21.6			
Spillage	44.3	44.3			
Ingress of Liquids from Clause 14.2.1 of IEC 60529	44.6	44.6			
Ingress of Liquids from Clause 14.2.8 of IEC 60529	44.6	44.6			
Mechanical Strength	56.11b	56.11b			
Inadvertent Placement	56.11c	56.11c			
Strain Relief	57.4	57.4			
List of Sample ID:					
MPK0906241719-001 MPK0906241719-002 MPK0906241719-003 MPK0906241719-004 MPK0906241719-005 MPK0906241719-006 MPK0906241719-007 MPK0906241719-008 MPK0907141015-001 MPK0907141015-002 MPK0907141015-003					
Evaluation Period	6/20/2014		Project No.	G101666188	
Due to previous testing performed and reported above, no additional testing was required for UL 60601-1 (2006) and CSA C22.2#601.1 (2005)					
8.1 Signatures					
A representative sample of the product covered by this report has been evaluated and found to comply with the applicable requirements of the standards indicated in Section 1.0.					
Completed by:	Patrick Morin	Reviewed by:	Marco Fedeli		
Title:	Project Engineer	Title:	Team Leader		
Signature:	Signature on file	Signature:	Signature on file		

9.0 Correlation Page For Multiple Listings

The following products, which are identical to those identified in this report except for model number and Listee name, are authorized to bear the ETL label under provisions of the Intertek Multiple Listing Program.

BASIC LISTEE	Kinesis Corporation
Address	22030 20th Avenue SE, Suite 102 Bothell, WA 98021-7404
Country	USA
Product	USB Foot Pedals

MULTIPLE LISTEE 1	None
Address	
Country	
Brand Name	
ASSOCIATED MANUFACTURER	
Address	
Country	
MULTIPLE LISTEE 1 MODELS	BASIC LISTEE MODELS

MULTIPLE LISTEE 2	None
Address	
Country	
Brand Name	
ASSOCIATED MANUFACTURER	
Address	
Country	
MULTIPLE LISTEE 2 MODELS	BASIC LISTEE MODELS

MULTIPLE LISTEE 3	None
Address	
Country	
Brand Name	
ASSOCIATED MANUFACTURER	
Address	
Country	
MULTIPLE LISTEE 3 MODELS	BASIC LISTEE MODELS

10.0 General Information

The Applicant and Manufacturer have agreed to produce, test and label ETL Listed products in accordance with the requirements of this Report. The Manufacturer has also agreed to notify Intertek and to request authorization prior to using alternate parts, components or materials.

COMPONENTS

Components used shall be those itemized in this Intertek report covering the product, including any amendments and/or revisions.

LISTING MARK

The ETL Listing mark applied to the products shall either be separable in form, such as labels purchased from Intertek, or on a product nameplate or other media only as specifically authorized by Intertek. Use of the mark is subject to the control of Intertek.

The mark must include the following four items:

- 1) applicable country identifiers "US" and/or "C" or "US", "C" and "EU"
- 2) the word "Listed" or "Classified" or "Recognized Component" (whichever is appropriate)
- 3) a control number issued by Intertek
- 4) a product descriptor that identifies the standards used for certification. Example:

For US standards, the words, "Conforms to" shall appear with the standard number along with the word, "Standard" or "Std." Example: "Conforms to ANSI/UL Std. XX."

For Canadian standards, the words "Certified to CAN/CSA Standard CXX No. XX." shall be used, or abbreviated, "Cert. to CAN/CSA Std. CXX No. XX."

Can be used together when both standards are used.

Note: A facsimile must be submitted to Intertek, Attn: Follow-up Services for approval prior to use.

The facsimile need not have a control number. A control number will be issued **after signed Certification Agreements** have been received by the Follow-up Services office, approval of the facsimile of your proposed Listing Mark, satisfactory completion of the Listing Report, and scheduling of a factory assessment in your facility.

MANUFACTURING AND PRODUCTION TESTS

Manufacturing and Production Tests shall be performed as required in this Report.

FOLLOW-UP SERVICE

Periodic unannounced audits of the manufacturing facility (and any locations authorized to apply the mark) shall be scheduled by Intertek. An audit report shall be issued after each visit. Special attention will be given to the following:

1. Conformance of the manufactured product to the descriptions in this Report.
2. Conformance of the use of the ETL mark with the requirements of this Report and the Certification Agreement.
3. Manufacturing changes.
4. Performance of specified Manufacturing and Production Tests.

In the event that the Intertek representative identifies non-conformance(s) to any provision of this Report, the Applicant shall take one or more of the following actions:

1. Correct the non-conformance.
2. Remove the ETL Mark from non-conforming product.
3. Contact the issuing product safety evaluation center for instructions.

10.1 Evaluation of Unlisted Components

Because Unlisted Components are uncontrolled, and they do not fall under a third party follow up program, Intertek may require these components to be tested and/or evaluated at least once annually, more often for certain components, as part of the independent certification process. The Unlisted Components in Section 5.0 require testing and/or evaluation as indicated.

Note to Intertek Follow Up Inspector: The Component Evaluation Center, CEC, will notify you in writing when these components must be selected and sent to the CEC for re-evaluation

Ship the samples to:
Intertek Testing Services NA Inc.
ETL Component Evaluation Center
45000 Helm Street, Suite 150
Plymouth Twp., MI 48170 USA
Attn: Component Evaluation Center

Sample Disposition: Due to the destructive nature of the testing, all samples will be discarded at the conclusion of testing unless, the manufacturer specifically requests the return of the samples. The request for return must accompany the initial component shipment. □

11.0 Manufacturing and Production Tests

The manufacturer agrees to conduct the following Manufacturing and Production Tests as specified:

Required Tests

N/A

11.1 Dielectric Voltage Withstand Test

Method

One hundred percent of production of the products covered by this Report shall be subjected to a routine production line dielectric withstand test.

The test shall be conducted on products, which are fully assembled. Prior to applying the test potential, all switches, contractors, relays, etc., should be closed so that all primary circuits are energized by the test potential. If all primary circuits cannot be tested at one time, then separate applications of the test potential shall be made.

The test voltage specified below shall be applied between primary circuits and accessible dead-metal parts. The test voltage may be gradually increased to the specified value but must be maintained at the specified value for one second or one minute as required.

Test Equipment

The test equipment shall incorporate a transformer with an essentially sinusoidal output, a means to indicate the applied test potential, and an audible and/or visual indicator of dielectric breakdown.

The test equipment shall incorporate a voltmeter in the output circuit to indicate directly the applied test potential if the rated output of the test equipment is less than 500VA.

If the rated output of the test equipment is 500VA or more, the applied test potential may be indicated by either:

- 1 - a voltmeter in the primary circuit;
- 2 - a selector switch marked to indicate the test potential; or
- 3 - a marking in a readily visible location to indicate the test potential for test equipment having a single test potential output.

In cases 2 and 3, the test equipment shall include a lamp or other visual means to indicate that the test potential is present at the test equipment output. All test equipment shall be maintained in current calibration.

Products Requiring Dielectric Voltage Withstand Test:

<u>Product</u>	<u>Test Voltage</u>	<u>Test Time</u>
All products covered by this Report.	N/A	N/A

11.2 Grounding Continuity Test

Method

Each product listed below shall be subjected to a test to determine that there is continuity between accessible dead-metal parts of the product and the grounding pin or blade of the attachment plug.



If all accessible dead metal is connected, only a single test need be performed. A visual or audible device (ohmmeter, buzzer, etc.) may be used to indicate grounding continuity.

Products Requiring Grounding Continuity Test:

All products covered by this Report.

N/A

12.0 Revision Summary				
The following changes are in compliance with the declaration of Section 8.1:				
Date/ Proj # Site ID	Project Handler/ Reviewer	Section	Item	Description of Change
25-Mar-2010	C. dela Rosa	2	--	Added optional product models ending with "-xx or -xxx" for customization such as custom programming, silkscreening, or product color.
G100066783 MPK	K. Miller	4	1	Changed Enclosure part number from KT70 to "Various" due to different silk screening and/or drilling patterns of enclosure.
			2	Added alternate IPX1 Switch with ratings 5Vdc, 0.1A.
			5	Corrected description of Input Jack, panel mount due to wrong info provided.
3-May-2011	Scott Coy	4	2	Revised description of switch component
B0590MPK	K. Miller	4	3	Removed line item and condensed into description with photo 4, item 2
		3	--	Removed pointer reference from photo # 5, item # 3
11-Dec-2012	C. Endres	1	--	Changed Applicant and Manufacturer address from 22121 17th Ave SE, Suite 112 Bothell, WA 98021-7404 to 22030 20th Avenue SE, Suite 102 Bothell, WA 98021-7404
G100974144PRT	J. Sorenson	1	--	Changed Applicant contact information from William Hargreaves 425.402.8100 x526 to Joy De Lucia 425.402.8100 alternate Carsten Buus email address to jdelucia@kinesis.com
		1	--	Manufacturer information added Carsten Buss 425.402.8100 x531 as primary contact email address cbuus@kinesis.com and William Hargreaves 425.402.8100 x526 as the alternate contact

12.0 Revision Summary				
The following changes are in compliance with the declaration of Section 8.1:				
Date/ Proj # Site ID	Project Handler/ Reviewer	Section	Item	Description of Change
20-Jun-2014	P. Morin M. Fedeli	1	Std	Updated standards From: "UL 60601-1 Issued: 2003/04/25 Ed:1 UL Standard for Safety Medical Electrical Equipment, Part 1: General Requirements for Safety CSA C22.2#601.1 Issued: 1990/01/11 (R2005) Medical Electrical Equipment - Part 1: General Requirements for Safety-General Instruction No 1; Update No 2" To: UL 60601-1, First Edition, 2003 Issued: 2006/04/26 Medical Electrical Equipment – Part 1: General Requirements for Safety CSA C22.2#601.1 Issued: 1990/01/01 (R2005) Medical Electrical Equipment - Part 1: General Requirements for Safety General Instruction No. 1: 1990, Supplement 1: 1994, Amendment 2: 1998; General Instruction No. 2: 2003"
G101666188MPK		2	--	All model numbers starting with "FS" changed: "FS" is replaced by "FP". Exception: Models starting with "FS008HT", "FS007MP", and "FSW007MP do not change.
		3	1	Wording ("Savant Elite") on top surface replaced by ("Savant Elite2").
		3	1,2,5	Model numbers changed: "FS" is replaced by "FP".
		7	1	Illustrations updated to reflect the change in model numbers. Second Illustration updated to remove the RSI Warning.
		7	3	Illustration removed.
		8	--	Added new test block.
		8.1	--	Revised signature.
3-Sep-2014	 B. Wang L. Cai 	2	--	Reinstated all model numbers starting with "FS" that was taken out by mistake on 20-Jun-2014.
G101666188MPK		3	1a, 6a, 7a, 8a	Reinstated photos for old "FS" models.
		3	2, 5	Reinstated old "FS" models associated with the same photo.
		3	6,7,8	Specified "FP" models to the photo titles.
		4	1, 4, 5	Added referenced to reinstated photos 1a, 7a and 6a
		6	9	Specified that also need to refer to Illustration 1a
7		1a	Reinstated "FS" model marking labels as Illustration 1a	