

Brief User's Guide

Kinesis® Advantage™ Keyboard

USB Contoured™ keyboard (Mac/PC Switchable)

KB500USB, KB500USB-LF, KB500USB/QD, KB510USB

This document is designed to be a quick overview and reference guide for your new Advantage contoured™ keyboard. The full User's Manual can be downloaded at kinesis.com (click on "support").

Connecting to your computer

The Kinesis Advantage keyboard requires a USB port on your computer or on a wall-powered hub. For Macintosh® systems, the operating system must be OS 8.6 or more recent. For Windows PCs, the operating system should be Windows® 2000 or newer. **No special driver is required**; just use the standard driver provided by the operating system. *Note: due to incomplete backwards compatibility of some USB 3.0 hardware, the Advantage keyboard will not work on some USB 3.0 ports in a Windows 7 environment. This problem does not exist in Windows 8, Linux, or Macintosh OS X.*

The first time you connect your keyboard to a Windows PC, the system will identify the keyboard as a new USB device and should install generic "HID" drivers provided by the operating system. It is advisable not to connect a USB device to the USB ports at the back of the keyboard until the keyboard itself is installed and operating correctly.

Using integrated palm rests and palm pads

The palm rests are designed to provide comfortable support for your hands while not actively typing, though many users rest their palms some of the time while typing in order to relieve strain on the neck and shoulders. For maximum speed, try holding your palms slightly above the palm rest area while typing. Do not expect to reach all of the keys on the keyboard without moving your hands from a stationary position on the palm rests. For maximum comfort, install the self-adhesive palm pads provided with your new keyboard. Replacement palm pads are available from your dealer or direct from Kinesis.

Connecting an optional foot switch

If you purchased an optional single or triple Contoured keyboard foot switch, it plugs in to the telephone-style (RJ11) connector at the back of the keyboard, where the main cable exits the enclosure. The default action for a single pedal activates the embedded keypad layer, while the additional pedals of a triple foot switch perform Shift and Keypad Enter. Foot switches are programmable just like any key on the keyboard (see **remapping** and **macros** on pages 2 & 3).

Familiar key layout

(QWERTY standard, Dvorak dual-legend available)

Kinesis Contoured keyboards retain the familiar QWERTY key layout. Several changes in the location of non-letter keys reduce the work required of your little fingers and increase the workload for your stronger thumbs. Optional foot switches can further reduce the work demanded of your hands and fingers.



Alphanumeric keys on the Advantage keyboard

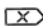
The alphanumeric key layout is split into two separate sections on the keyboard. However, the finger you use to press each key is the same one that you would use on a traditional keyboard. The middle row of keys is the home row.

To help you to locate the home row, these keys are a different color and are differently sculpted. It is important to be able to find the home row by touch from anywhere on the keyboard. To facilitate this, Kinesis has designed the tops of the home row keycaps with a cupped shape to comfortably hug your fingertips.

Keys legends which differ for PC and Macintosh

PC/Windows keyboards and Macintosh keyboards have different legends for certain keys that perform the same action. As the Advantage keyboard can be used on both a PC and on a Mac, we've provided a list below to clarify the slight differences you may notice.


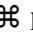
PC *Backspace* is the Mac "Delete"

PC *Delete* is the Mac "Forward Delete," 

PC *Enter* is the Mac *Return*

PC *Ctrl* is the Mac *Control*

PC *Alt* is the Mac *Alt/Option*

PC Windows  key is the Mac Command  key

PC keypad = key is a duplicate of the number row += key

The Mac keypad = key is unique to the Mac OS and isn't recognized by Windows.

CHOOSE FROM FOUR MODELS

Except for KB500USB-LF, all models use Cherry MX low-force, no-click tactile switches (brown stem), which were developed by Cherry specifically for Kinesis in 1992.

KB500USB: Standard model, QWERTY legends, black enclosure and keycaps, white legends (U.S., German, Swedish, and UK layouts available).

KB500USB-LF: Same as the standard model except with low-force linear-feel switches (Cherry MX, red stem). U.S. QWERTY layout only.

KB500USB/QD: The Dvorak layout is a driverless on-board feature of all Advantage keyboards. However, this model has QWERTY/Dvorak dual white legends on black keys. U.S. layout only.

KB510USB: Advantage Pro has a metallic-finished top case, black keys, white QWERTY legends, extra lockable memory for longer macros, and a single footswitch. Memory locking details on page 3. U.S. layout only.

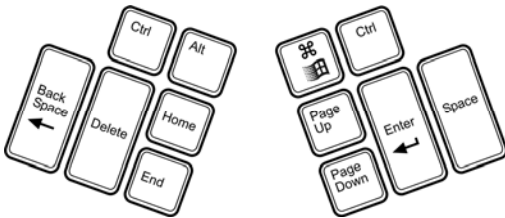
Configuring your keyboard for PC or Mac with the “instant configuration” feature

The Advantage USB MPC keyboard has three pre-configured layouts, each optimized for different operating systems (see following page): *Windows, PC* (non-windows), and *Macintosh*. The keyboard is shipped in the *Windows* mode for the U.S. model, and in *PC* mode for non-US models.

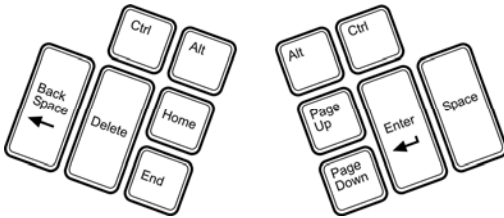
Two extra keycaps and a keycap removal tool are provided with your new keyboard if you decide to change from the default configuration. For replacing selected keycaps, refer to the diagrams below.

To change the instant configuration setting, it is best to open a text editor. Use the = key in the number row as a modifier and while holding it, tap the P for PC mode (no Windows key), or the W for Windows mode, or the M for Mac mode, then release the = key. See the three images below showing the thumb key actions for the different configurations.

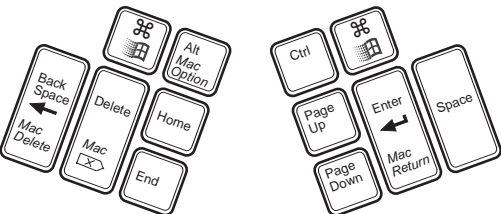
Key actions in Windows mode, default (=w).



Key actions in PC mode (=p).



Key actions in Macintosh mode (=m). Mac-specific actions are not legended except \mathcal{H} .

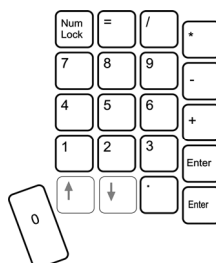


Embedded numeric keypad

The Advantage keyboard has a second layer of key actions referred to as the “embedded layer.” The embedded layer includes a complete numeric keypad on the right side of the keyboard. The Kinesis keypad uses the *Space* key for 0 and includes an = key.

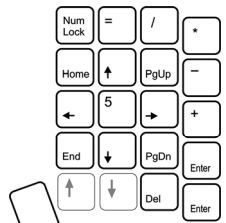
To turn on the embedded layer, tap the *Keypad* function key, and tap again to turn it off. This may also be accomplished with an optional foot switch, which is held down to activate the embedded layer and released to return to normal key actions.

Embedded keypad, num lock on.



Num Lock must be on (see “Changing *Num Lock*” below) to create numbers with the embedded keypad. With *Num Lock* off, these keys perform cursor movement actions (see the figure to the right).

Embedded keypad, num lock off.



Changing *Num Lock* state

To change the state of “*Num Lock*,” press the *Keypad* function key, then press the *Nm Lk* key (legended on the front face of the “7&” key in the top number row).

Mac-specific key actions

In *Macintosh* mode, the embedded keypad = (on the front of the 8* key in the number row) performs the Mac specific keypad= action which is not recognized in Windows. When in Windows or PC mode, the embedded keypad = is the same as the =+ key in the number row.

Also, the PC *Scroll Lock* key (in the upper right function key group) becomes the Macintosh power key. When using Mac mode on a Macintosh computer, press this key to begin the shut down process.

LED Indicators

There are four green lights (LEDs) near the center of the Kinesis keyboard. The far left LED (“A”) is *Caps Lock*, followed by *Num Lock* (“1”), *Scroll Lock* (↓) and *Keypad* \mathcal{H} . Most computers have



Num Lock on by default. Do not be concerned about this, as LEDs last a very long time and consume very little power. If you wish to turn *Num Lock* off, see instructions above.

Turning on and off audible tones for toggle keys (Program + hyphen/dash key)

The keyboard includes audible tones for keys which toggle on and off. These include *Caps Lock*, *Num Lock*, *Keypad*, *Scroll Lock*, and *Insert*. When the keyboard is used with a PC, tones sound twice when the keys above are turned on and once when the key is turned off. To turn off these tones, hold down *Program* and press the *hyphen/underscore* key (in the upper right corner of the right-side keywell). If you wish to turn on the tones again, repeat the process.

Turning on and off the key click feature (Program + \| key)

By default, the keyboard includes an audible click for all keys. To turn off the key click, hold down *Program* and press the *Backslash* key (“\”) located just below the *hyphen/underscore* key). If you wish to turn on the key click again, repeat the process.

Remapping

Remapping is a feature allowing you to move, swap, copy, or even inactivate single key actions. (Please note, the keycaps are not designed to be moved). Your Advantage keyboard has the unique ability to do this without drivers.

The Remapping process (Program + F12)

To remap a key action, hold down the *Program* key and tap *F12* (also labeled *Remap*), then release both keys. The keyboard’s lights will begin flashing rapidly. Tap the key whose action

you want to copy somewhere else (source key). The LEDs will begin flashing slowly. Now tap the key where you want the new action to appear (destination key). The LEDs will again flash rapidly. To remap more than one key, repeat this process. You do not need to exit from remapping mode between keys.

When you are done making changes, exit remapping by holding the *Progrm* key and tapping *F12*. The lights should immediately stop flashing. You must exit from remapping for your keyboard to perform the changes you've made.

Default layout always available when remapping

When you are in remapping mode, the factory configured key layout is always active. No key can be "lost" by remapping.

Remapping from or to the embedded layer

To remap an embedded key action to a convenient top level location, turn on the embedded layer before entering remapping mode. After tapping the "source" key, tap the *Keypad* key to switch back to the top layer, then tap the "destination" key where you want the new action.

To remap from the top layer to the embedded layer, follow the normal remapping process but tap the *Keypad* key before tapping the "destination" key.

Switching between QWERTY and Dvorak

To activate the "on-board" Dvorak layout, press and hold *Progrm* + *Shift* + *F5*. Repeat this sequence to return to the default QWERTY layout. Please note, activating the Dvorak layout will erase any other remapping that you may have done, but macros are not erased. If you want to customize the keyboard and switch back and forth between QWERTY and Dvorak, use macros to make your special changes. Also, macros will play correctly even if recorded in QWERTY and played when the keyboard has been switched to Dvorak.

Macros

Macros allow you to automate frequently-used phrases or key combinations. Macros are shortcuts and time savers which reduce keystrokes needed for awkward, complex, or repetitive tasks. Essentially anything you would normally type with your keyboard can be stored as a macro. Your Advantage keyboard has the unique ability to do this without drivers. Up to 24 macros are normally allowed with up to ~55 characters in each (up to ~120 characters with the Advantage Pro model). Refer to the full manual (see back page) for additional details.

Macro modifier keys and macro trigger keys

When programming a macro, you must first designate the key or keys (the "trigger") which will play back the macro. A trigger can be any letter, number, or navigation key (but not a modifier such as Shift, Ctrl, or Alt). Such a key may also be combined with one or more modifier keys. For example a macro can be triggered by *Capslock*, and a different macro can be triggered by *Shift-Capslock*, or by *Ctrl-Shift-Capslock*.

The keyboard will not allow you to use a modifier by itself to trigger a Macro unless it is first remapped to be a non-modifier key (see above). Macros which include a modifier key in the trigger can be activated with either the right or left modifier.

Creating a macro (Progrm + F11)

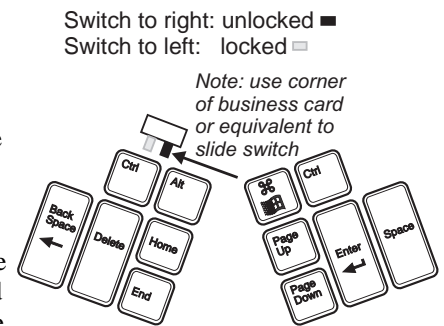
To create a macro, hold down the *Progrm* key and tap *F11* (also labeled *Macro*), then release both keys. The keyboard's lights will begin flashing rapidly. Tap the key or combination of keys that will playback the macro (the lights will begin flashing slowly). Now type the key or keys you wish to include in your macro. When you have finished, exit by holding the *Progrm* key and tapping *F11*. The lights should immediately stop flashing. If not, you may have added *F11* to the end of your macro and will need to repeat this process.

Resetting keyboard memory & memory locking

If the keyboard behaves strangely or you wish to re-create the factory settings, the first thing to try is a memory reset. *Note "Instant Configuration" settings are not affected by resetting the keyboard's memory.* Two different memory reset procedures are described below.

Memory locking

If you have the Advantage Pro model, be sure the memory locking switch is to the right (unlocked). See adjacent image for the location. The switch can be moved using the edge of a business card or a small, folded piece of regular-thickness paper.



Memory reset, Option One (Progrm + Shift + F10)

This procedure will erase all remapping and macros. It will not switch Dvorak back to QWERTY or vice versa. Press and hold the *Progrm* key, then add one of the *Shift* keys, and finally add the *F10* function key so that all three keys are depressed. The lights on the keyboard should begin flashing. Release the keys. When the flashing stops, the keyboard's memory has been reset. (This may take a few seconds to complete).

Memory reset, Option Two (F7)

This procedure is more aggressive than Option One and will completely reset the memory back to factory settings (24 macros, QWERTY layout). Hold down the *F7* key *before* turning on the power to your computer. Start your computer and after a few seconds, release *F7*. A successful reset is indicated if the keyboard's lights flash several times after releasing *F7*.

Troubleshooting & technical support

Visit our web site, kinesis.com, for usability and troubleshooting tips. Click on "support," then on "technical support."

Contacting Kinesis Technical Support

Contact Kinesis technical support only after you have read the entire User's Manual and still have problems or unanswered questions. You may contact Kinesis Technical Support by E-mail (tech@kinesis.com), fax (425-402-8181), or phone (800-454-6374 US only or 425-402-8100). Technical support hours are 8:30am to 4:30pm Pacific Time except weekends and holidays.

When you contact Kinesis, be prepared to document your purchase date, as well as your product model number and serial number. Also know the brand and model of your computer and your computer's operating system.

Getting an RMA number prior to product repair

For any repair, whether or not it is covered by your warranty, you must contact Kinesis to explain the problem, provide certain information, and get an RMA number to write on your package. Packages sent to Kinesis without first obtaining an RMA number may be refused. Product will not be repaired without information and instructions from the owner.

Packaging and Shipping

If you need to ship the product back to Kinesis, use its original or other packaging that protects it against impact and shock. Be sure to contact Kinesis for an RMA number and Kinesis' shipping address. You should insure the package since Kinesis is not responsible for items until they are received by the Kinesis repair center.

SAFETY & HEALTH TIPS

New Users: Establish realistic expectations!

If you currently have an injury to your hands or arms, or have had such an injury in the past, it is important that you have realistic expectations of your keyboard. You should not expect an immediate improvement in your physical condition simply because you are using a new keyboard. Your physical trauma has built up over months or years, and it may take a number of weeks before you notice a difference. At first, you may feel some new fatigue or discomfort as you adapt to your Kinesis keyboard.

Keyboard is not a medical treatment!

The Kinesis Advantage keyboard is not a medical treatment or a substitute for appropriate medical treatment. If any information in this guide seems to contradict the advice you have received from a health care professional, please follow your health care professional's instructions.

ADDITIONAL INFORMATION

Full User's Manual

View or download the full Advantage Keyboard User's manual by visiting the "support" section at kinesis.com.

Kinesis Keyboard Limited Warranty

Kinesis Corporation ("Kinesis") warrants to the original retail purchaser that this Kinesis keyboard ("Product") is free from defects in materials and workmanship and will perform substantially in accordance with the Product documentation for two years from the date of purchase.

This Warranty does not apply to any software which might have been enclosed with the product, which are covered by a Kinesis License Agreement. If Product fails due to accident,

abuse, inappropriate use, or normal wear, Kinesis shall have no responsibility under this Limited Warranty.

For complete warranty information visit kinesis.com and click on "Support" to find the warranty PDF document.

Purchaser's Exclusive Remedies

During the first TWO (2) years after the date of original purchase, the exclusive remedy for a defect in this Kinesis Product shall be, at Kinesis Corporation's option, either repair or replacement of the product. If you suspect the Product is not working properly or if you have questions about the performance of the Product, contact Kinesis technical support.

If you wish to return the Product to Kinesis for any reason, you must obtain from Kinesis an RMA number and instructions for returning the product. You are responsible for the cost of shipping the product to Kinesis. Within the United States and Canada, Kinesis will ship products repaired or replaced under warranty to you by ground at no charge. Repair parts and replacement Product will be either reconditioned or new.

Disclaimer of Other Warranties

The warranty and remedies set forth above are exclusive and in lieu of all others, whether oral or written, express or implied. Kinesis specifically disclaims any and all implied warranties, including, without limitation, warranties of merchantability and fitness for a particular purpose. No Kinesis dealer, agent, or employee is authorized to make any modification, extension, or addition to this warranty. Kinesis does not warrant that the product will meet your requirements, or that operation of the product will be uninterrupted or error-free, or that all errors will be corrected.

Limitation of liability

Kinesis is not responsible for special, incidental, or consequential damages resulting from any breach of warranty, or under other legal theory, including but not limited to lost profits, downtime, goodwill, damage to or replacement of equipment and/or property nor any costs of recovering, reprogramming, or reproducing any program or data stored in or used with Kinesis products.

Legal notice: Trademarks & Patents

Kinesis is a registered trademark and Advantage, MPC, MPC/QD, and Contoured are trademarks of Kinesis Corporation. Windows is a registered trademark of Microsoft Corporation. Apple, Mac, Macintosh and OS X are registered trademarks of Apple Inc.

The Kinesis Advantage keyboard is protected by U.S. and other patents including US 5,610,602, US 6,005,496, US 5,673,040, and US 5,689,253.